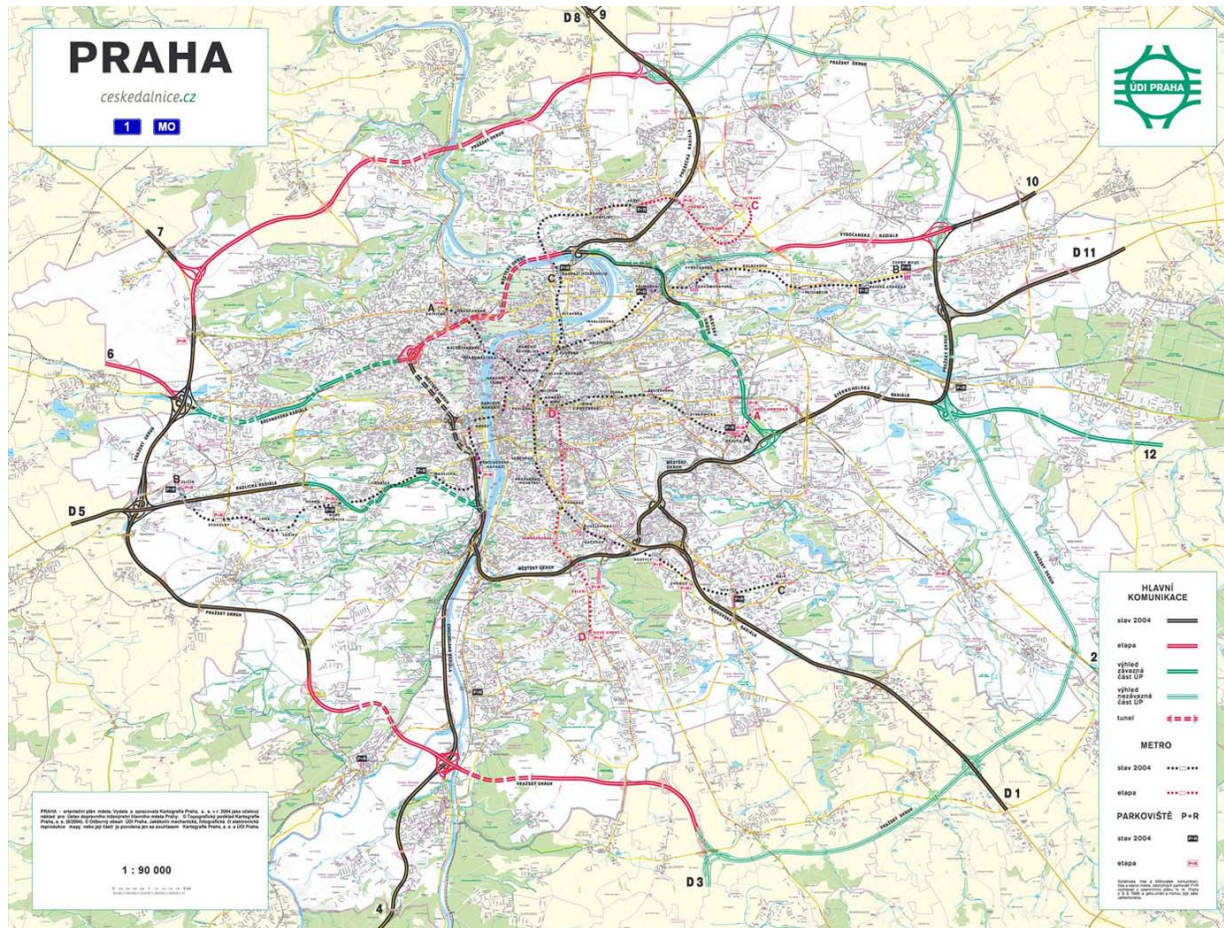


Traffic Control in Prague

Vienna, 16.5.2013



The capital city of Prague

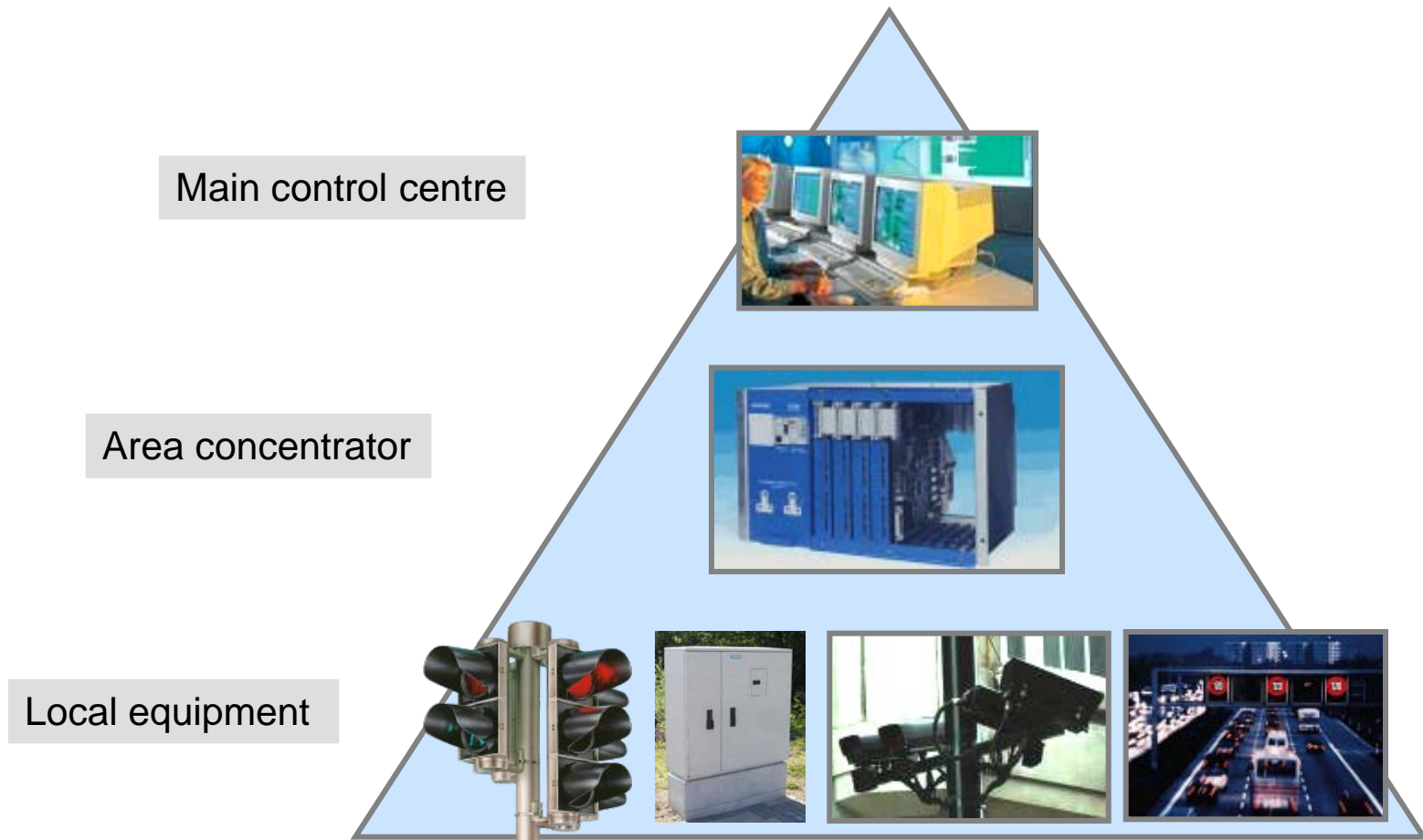


Traffic control – roads and streets

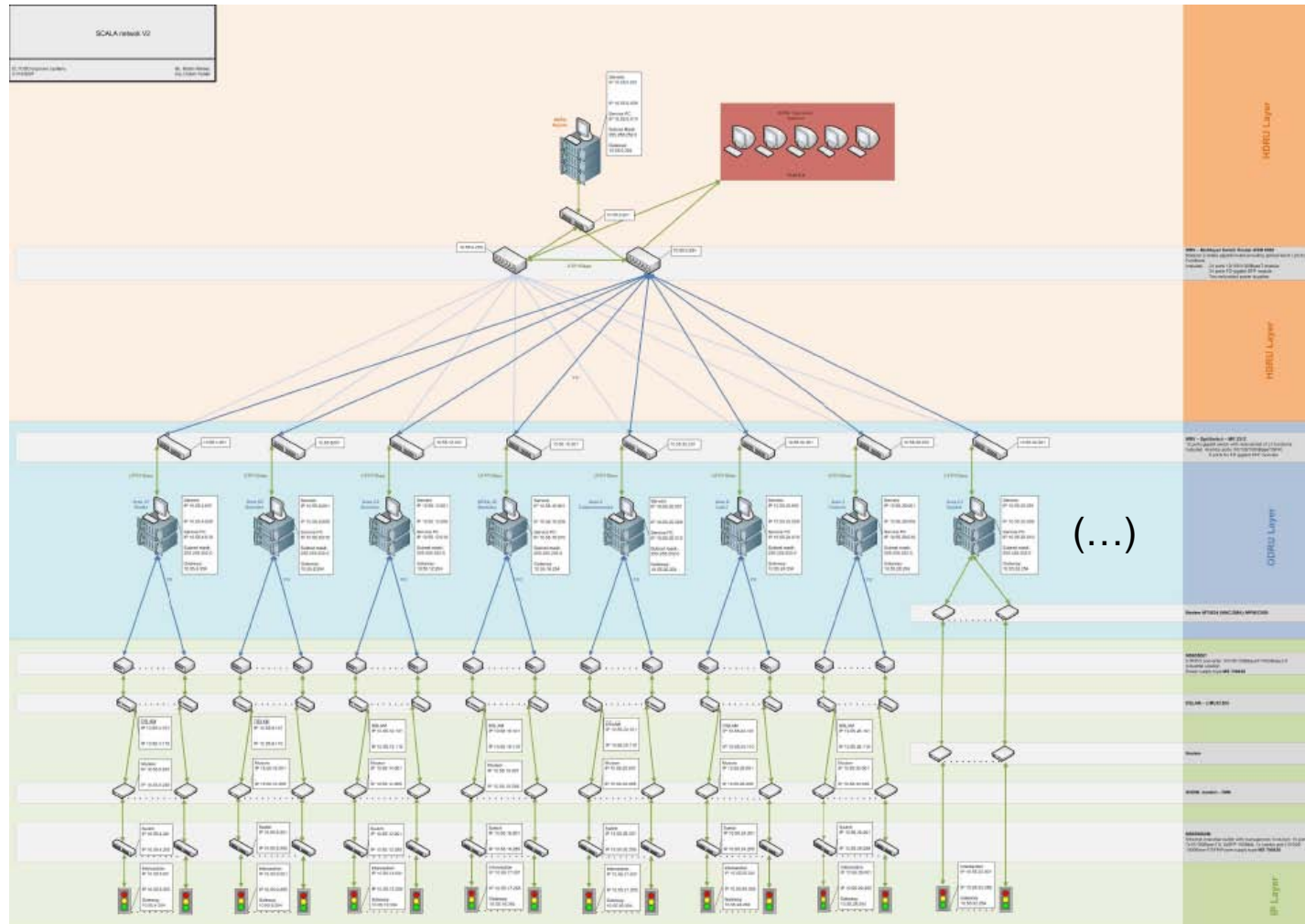
- ❖ Intersection Control
- ❖ Tunnel Control
- ❖ Speed and Diversion Control
- ❖ Public Transport Prioritization



Intersection control



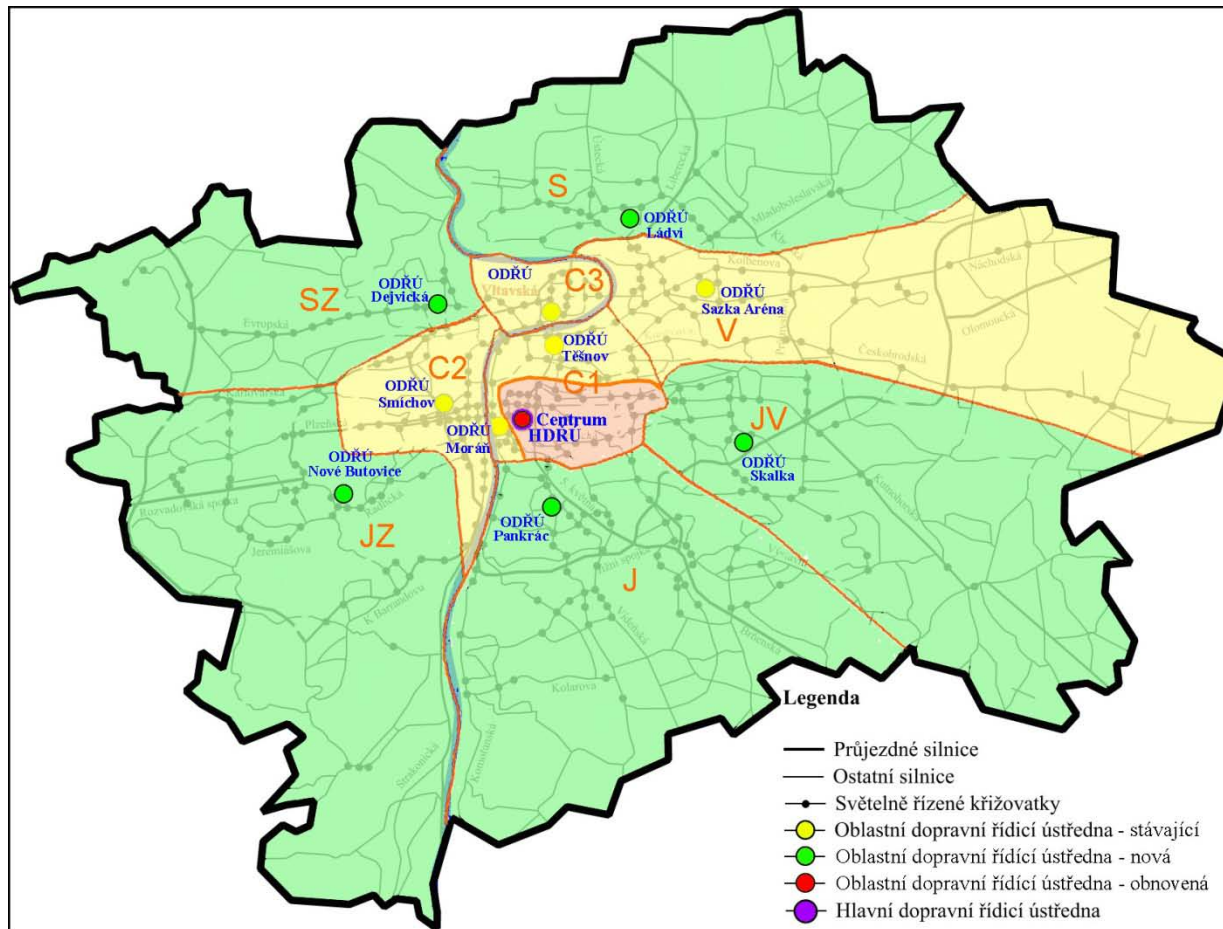
Traffic management topology



1

(7+3)

The areas



7 x SCALA

3 x VRS

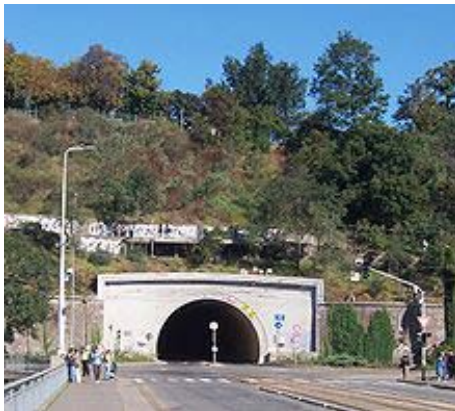
Tunnel control

- ❖ Technology control
- ❖ Traffic control
- ❖ Fire detection
- ❖ Video detektion
- ❖ Velocity measuring
- ❖ Traffic data
- ❖ Lighting
- ❖ Ventilation
- ❖ CO, NO measuring
- ❖ Evacuation systemes
- ❖ CCTV
- ❖ SOS boxes



Prague tunnels

<i>Name</i>	<i>Length</i>	<i>Year</i>
Strahovský automobilový tunel, Praha, ČR	2,0	1997
Těšnovský automobilový tunel, Praha, ČR	0,4	2000
Letenský automobilový tunel, Praha, ČR	0,4	2002
Podjezd Zlíchov - Radlická, Praha, ČR	0,2	2002
Tunel Mrázovka, ČR	1,3	2004
Tunelový komplex Blanka	5,5	2014?
Tunely SOKP – Lochkov, Komořany, Praha	1,6 +1,8	2010



Common city dispatching – Na Bojišti

- ❖ Intersection control
- ❖ VIP routes
- ❖ CCTV
- ❖ Tunnels monitoring
- ❖ Manual interventions
- ❖ Connection to outer ring
- ❖ Distribution of traffic information



Thanks for your attention



eltodo@eltodo.cz